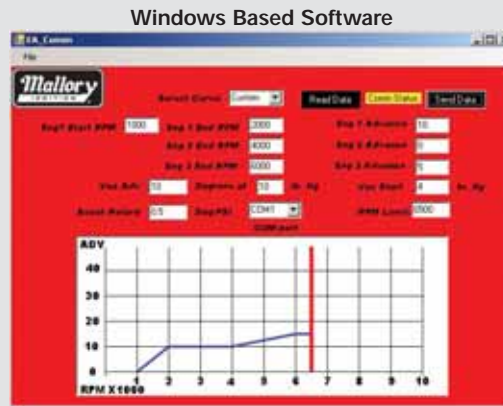
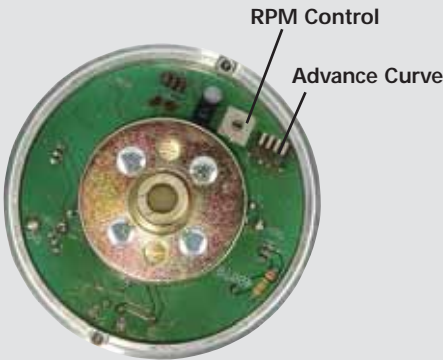


## MAXFIRE DISTRIBUTORS



### Features At A Glance:

- Combines a High Output CD Ignition and Full Electronic Distributor
- Micro Processor Controlled Multi Spark Digital CD
- 480 primary voltage output, 115mJ spark energy
- All Electronic RPM Based and Vacuum Based Advance Curves
- Select from 7 Preprogrammed Performance Advance Curves or Custom Build Your Own
- Digital Boost Proportional Retard for Supercharged or Turbocharged Engines (3 BAR MAP Sensor Built-in); 0.1-2° per pound of boost with maximum 15°
- On Board Digital Rev Limiting; adjustable from 4500-8000 RPM in 250 RPM increments
- All Billet CNC Machined Components
- Hall Effect Trigger for Maximum Timing Accuracy at any RPM
- Combination Ball Bearing & Bushing Shaft Support for Maximum High RPM Stability
- Convertible between Standard or Large Diameter Caps
- Complete with Windows Based Software for Total Adjustability
- Ready to Drop in and Run - No Ignition Box Required
- For best performance use 29440 or 30440 coils
- Also programmable with optional hand held controller, 29124



MAXFIRE DISTRIBUTORS			
ENG YEAR	CYL	ENGINE	PART NO.
<b>CHEVROLET - Includes All Distributor Equipped Engines except LT Series</b>			
1955-96	V8-RH	262-454, 502 except 348-409, LT Series Rocketblock, Tall Block and Merlin/Superblock w/ Small Stack Cap	1248214
1955-96	V8-RH	262-454, 502 except 348-409, LT Series Rocketblock, Tall Block and Merlin/Superblock w/ COMP 9000 Cap	1248204
<b>FORD MOTOR COMPANY - Includes Lincoln, Mercury, and Light Trucks</b>			
1968-95	V8-LH	351C/M, 400, 429, 460 w/COMP 9000 Cap	1256704
1969-95	V8-LH	351W w/Comp 9000 Cap	1255404
1962-1995	V8-LH	221, 255, 260, 289, 302W	1255104

TUNE UP PARTS					
<b>12 Series - With Stack Cap (Standard)</b>					
Cap 205M	Rotor 29792	Wire Retainer 29314	Cap Adapter -	Optional Controller 29124	
<b>12 Series - With COMP 9000 Cap (Large)</b>					
Cap 29745	Rotor 29736	Wire Retainer 29744	Cap Adapter 29748	Optional Controller 29124	