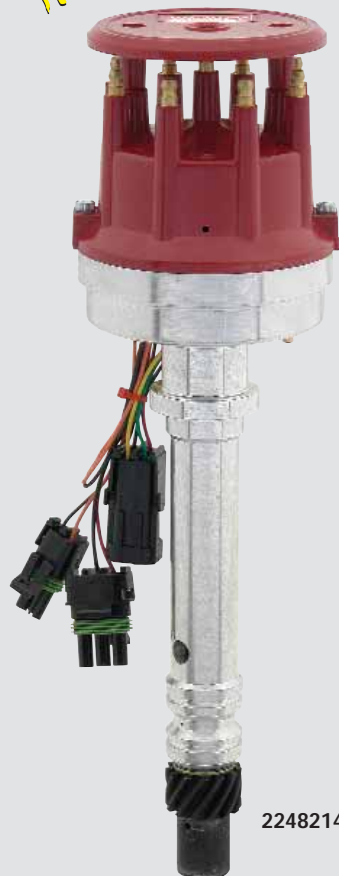


## E-FIRE DISTRIBUTORS



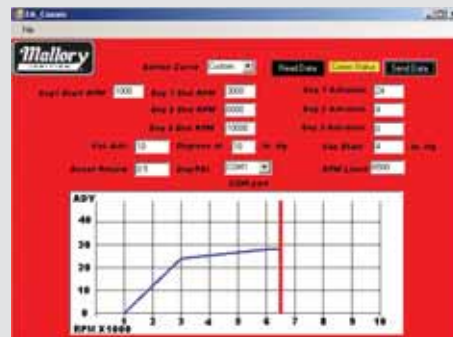
2248214



### Features At A Glance:

- High Energy Inductive Storage – **7.5 Amp Maximum Current**
- All Electronic RPM Based and Vacuum Based Advance Curves
- Select from 7 Preprogrammed Performance Advance Curves or Custom Build Your Own
- Digital Rev Limiting
- Boost Proportional Retard for Supercharged or Turbocharged Engines (3 BAR MAP Sensor Built-in); 0.1-2° per pound of boost with maximum 15°
- Hall Effect Triggering for Maximum Timing Accuracy at any RPM
- Combination Ball Bearing & Bushing Shaft Support for Maximum High RPM Stability
- Convertible between Standard or Large Diameter COMP 9000 Cap
- Complete with Windows Based Software for Total Adjustability
- Ready to Drop in And Run - No Ignition Box Required
- For best performance use 29440 or 30440 coils
- Also programmable with optional hand held controller, 29124

### Windows Based Software



E-FIRE DISTRIBUTORS			
ENG YEAR	CYL	ENGINE	PART NO.
<b>CHEVROLET - Includes All Distributor Equipped Engines except LT Series</b>			
1955-96	V8-RH	262-454, 502 except 348-409, LT Series Rocketblock, Tall Block and Merlin/Superblock w/ Small Stack Cap	2248214
1955-96	V8-RH	262-454, 502 except 348-409, LT Series Rocketblock, Tall Block and Merlin/Superblock w/ COMP 9000 Cap	2248204
<b>FORD MOTOR COMPANY - Includes Lincoln, Mercury, and Light Trucks</b>			
1968-95	V8-LH	351C/M, 400, 429, 460 w/COMP 9000 Cap	2256704
1969-95	V8-LH	351W w/Comp 9000 Cap	2255404
1962-1995	V8-LH	221, 255, 260, 289, 302W	2255104

TUNE UP PARTS					
<b>22 Series- With Stack Cap (Standard)</b>					
Cap	Rotor	Wire Retainer	Cap Adapter	Optional Controller	
205M	29792	29314	-	29124	
<b>22 Series- With COMP 9000 Cap (Large)</b>					
Cap	Rotor	Wire Retainer	Cap Adapter	Optional Controller	
29745	29736	29744	29748	29124	